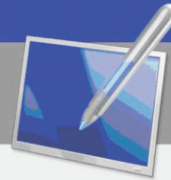


# Donview Touch-Screen



LCD Touch AIO

## User's Manual

***Donview***

**XVII. Faults and Troubleshooting**

No power	Check if AC power wire of this Product is well inserted into power socket. However, if it still has no power, unplug the power plug and wait for 60s before reinsert it, then start the machine.
No picture	Check the connection of antenna at rear side of machine and try other channels.
Poor receiving quality	Ghost or illusion may occur if there are high buildings or mountains nearby and in such case, you may manually adjust the picture quality; please refer to introduction in “manual searching” or change the receiving direction of external antenna. If indoor antenna is used, it may have difficult receiving in some cases. The picture quality can be improved by changing the antenna direction. However, if poor picture quality still exists, please use an outdoor antenna.
Clear picture, but no sound	Increase volume, check if the machine is mute and press Mute button on remote controller to cancel mute.
Good sound, but poor color	Increase contrast and brightness.
Snowflake in picture and noise	Check connection of antenna at rear side.
Ghost or “illusion”, no response of remote controller	It may be caused by poor antenna position. Picture quality can be improved by using high directional antenna; the remote controller should correspond to remote control sensor on the machine. If there's no reaction, check if the plastic isolation paper is removed and if batteries are correctly installed, and replace the batteries. If this machine fails to receive signal within 15min it will be auto-matically switched to pause state.
Screen is too bright or dark (PC mode)	Adjust contrast and brightness in main menu.

**XVIII. Notice for Waste Recycling**

If this Product is no longer needed, or reaches its service life, shall be submitted to the qualified recycling plants recognized by state in accordance with the relevant laws and regulations for recycling of waste electric products in order to care and protect our earth.

**XIX. Contact Information**

Company Name: Shenzhen Donview Electronics Technology Co., Ltd.  
 Website: <http://www.donview.com.cn>  
<http://www.donvieware.com>  
 Hotline: (86) 400-001-8522



Please click the center of positioning cursor using whiteboard pen, the green light circle will gradually become orange; when entire circle becomes orange, the positioning is finished and positioning cursor will be automatically moved to the next point .  
(as shown in the left figure).

Repeat the above action, until the positioning of all points is finished.

### 3. Shortcut Configuration

Click “Configuration” button to change corresponding functions of shortcuts of AIO.

### 4. Exit Server Program

Click “Disable” button to exit the server program and the tray icon of system will disappear.

### 5. Enable Whiteboard at Startup

Tick “Enable device at startup” to automatically connect AIO and enable service program at the next startup.

## XVI. Product Upgrade & Maintenance

Introduction to product upgrade and module replacement:

### System upgrade:

Online upgrade: such upgrade shall be compatible to the current AIO and version and enough storage space shall be reserved for downloading and installation.

Local upgrade: the upgrade package which is from existing external device directory and compatible to this TV is used for local upgrade.

### Module replacement:

1. Upgrade of software module: during software upgrade, the user may select upgrade of materials, resources, simulation and question bank module.

2. Upgrade of hardware module: if hardware has fault or new functions are needed, the user may make application to manufacturer for replacement of following modules: interface module, power module, infrared emission/receiving module, ops computer module and Android module.

### Product maintenance:

Early faults can be prevented and service life of machine can be prolonged by carefully and regularly cleaning. It is a MUST to power off and unplug power wire before start of cleaning.

### Screen cleaning

1. Way to keep screen clear: add small amount of softening agent or detergent in water, wet the soft cloth in water and have it dried and then wipe the screen.

2. If screen has excessive water on it, make sure it is fully dried before starting the machine.

### Shell cleaning

1. Please clean the dirt or dust on shell using soft, dry and hairless cloth. It is not allowed to use wet cloth.

2. Please unplug the power plug before this machine is idled for certain period to prevent further damaged caused by lightning or electric wave.

3. This Product shall be disassembled by professional staff only. For any problem please kindly consult local maintenance person.

### Maintenance instructions:

1. Warranty period of entire machine: 3 years.

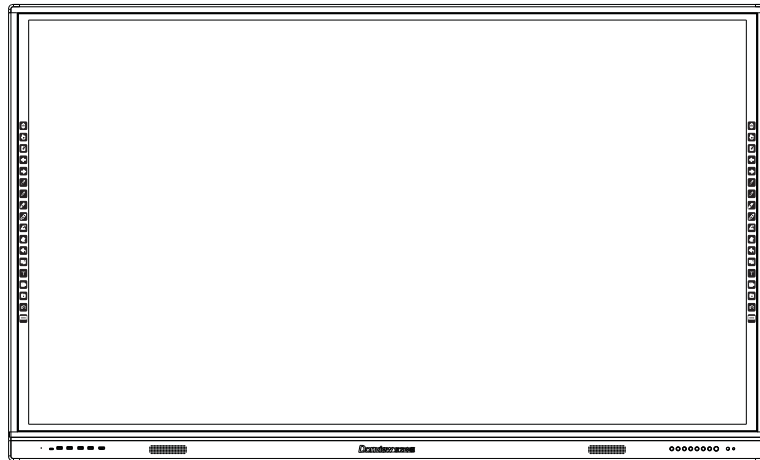
2. Warranty period of other accessories: 1 year.

3. Software enjoys life-long free upgrade.

# Contents

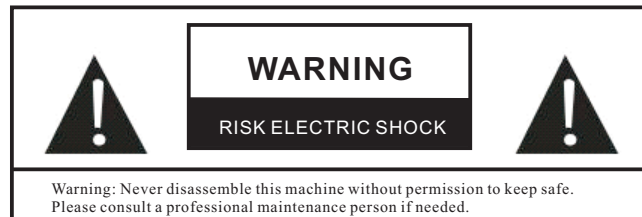
I. Outline Drawing. . . . .	2
II. Brief Introduction to External Labels . . . . .	2
III. Notice for Operation. . . . .	3
IV. Safety Notice - Warning. . . . .	4
V. Safety Notice - Caution. . . . .	5
VI. Introduction to Product Operation and Maintenance . . . . .	6
VII. Introduction to Quick Use . . . . .	7
VIII. Control Panel. . . . .	8
IX. Introduction to Ports at Rear Side. . . . .	10
X. Introduction to Remote Controller . . . . .	11
XI. Introduction to Menu Operation. . . . .	12
XII. Use of Android System . . . . .	14
XIII. Installation of Electric Whiteboard in Computer System . . . . .	22
XIV. Drive Installation. . . . .	23
XV. AIO Positioning. . . . .	23
XVI. Product Upgrade & Maintenance. . . . .	24
XVII. Faults and Troubleshooting . . . . .	25
XVIII. Notice for Waste Recycling . . . . .	25
XIX. Contact Information. . . . .	25

## I. Outline Drawing

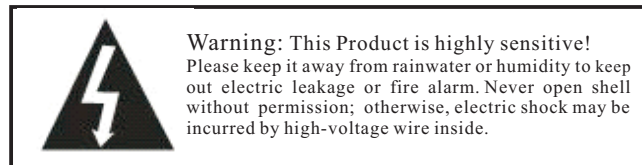


## II. Brief Introduction to External Labels

### Warning



Please assemble, use and maintain this Product in strict accordance with regulations below to keep safety since electric shock or fire hazard may be incurred by improper operations, even if we have attached much attention to personal safety in design and manufacturing stage. Please carefully read the safety instructions below before using it.

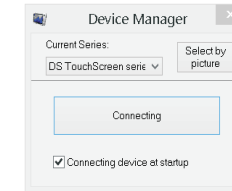


## XIV. Drive Installation

No drive is needed to be installed for this LCD AIO.

## XV. AIO Positioning

Once the Donview electric whiteboard software is installed, it will generate "Device positioning" icon on desk:  and double click to open it <as shown in the right figure>.

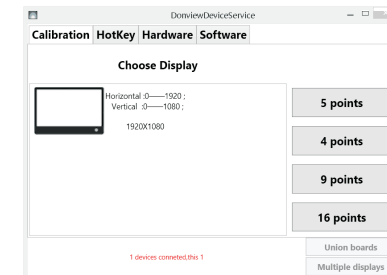


### 1、Display and Replacement of Current Series



Click "Current series" and choose AIO series; then click "Enable device" button; after connection is done, the window will be changed <as shown in the left figure>.

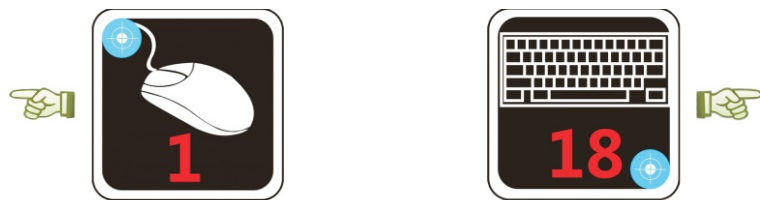
### 2、Positioning



Click "Device positioning" button or click service program icon, select "Positioning" option to pop up the window <as shown in the left figure>.



Click one positioning mode to enter the positioning of electric whiteboard. <As shown in the left figure>

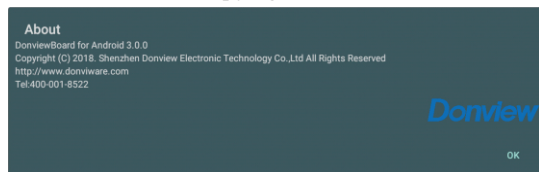


**Note:** The reference is made to the upper left or lower right corners of the shortcuts. Please position according to the locations shown.

When DonviewBoard for Android is installed on the capacitive AIO, positioning and shortcuts positioning are not required for the AIO, since it is shipped with such positioning. The functions of shortcuts and Disable shortcuts are available on the Capacitive AIO while Flip whiteboard is not.

#### 8、About

It displays software version and copyright information.



### XIII. Installation of Electric Whiteboard in Computer System

#### 1. Introduction to installation of electric whiteboard software CD

DonviewBoard electric whiteboard software includes 2 CD:

► Electric whiteboard software (Junior version): applicable to kindergarten and junior schools;

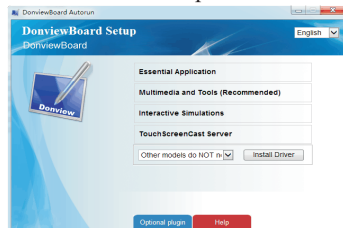
► Electric whiteboard software (general version): applicable to junior high school, senior high school, vocational school, colleges and universities and other industries.

#### 2. Key notices in installation

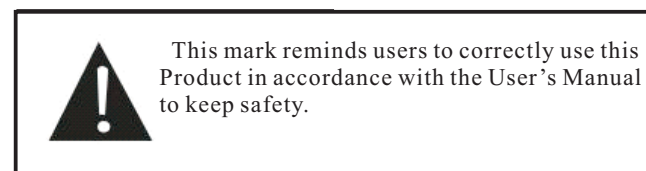
**Note:** if software is blocked by antivirus software or firewall during installation, please select “Allow all operations of program” and tick “Remember my choice, no more prompt”; otherwise, it may lead to installation failure or software installation cannot be normally used.

#### 3. Installation interface of electric whiteboard

Put Donview electric whiteboard CD in the drive of computer and it will have auto run and pop up the interface below:



**Note:** if the interface above is not popped up automatically, please click the autorun.hta application program in CD to pop up it.



#### FCC Warning

This equipment has been tested and found to comply with the limits for a Class B device, pursuant to Part 15 of the FCC rules. These limits are designed to provide reasonable protection against harmful interference in installation. This equipment generates, uses, and can radiate radio frequency energy. If this equipment is not installed and used in accordance with the instructions, it may cause harmful interference to radio communications. If this equipment does cause harmful interference to radio or television reception, the user is encouraged to try to correct the interference by taking the following measures:

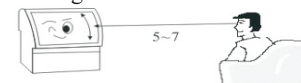
- Increase separation between this Product and wireless communication product.
- Reorient or relocate the receiving antenna for wireless communication product.
- Connect this Product and wireless communication product to a different circuit.
- Consult your local dealer for technical advisory.

To ensure continued compliance with FCC, please shield the video wiring using the attached earthing power wire and cladding ferrite core. However, the user, if transforming this Product without written permission by relevant agencies, shall be deprived of the authority of operating this Product.

### III. Notice for Users

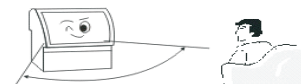
#### 1、Recommended distance for comfort viewing

The best distance for viewing shall be 5-7 times of that of screen height.



#### 2、Height & angle

Appropriate viewing height and angle can help get you rid of an easy fatigue.



#### 3、Volume

Please keep proper volume to keep out interference to others (at night, in particular).

#### 4、Ambient brightness

Your eyes may suffer from an easy fatigue in case of direct sunlight to screen, excessive brightness or darkness of room, intense darkness without light around, or fluorescent screen has reflected light. So, please keep soft and indirect lighting, instead of direct sunlight on screen. The brightness sufficient for reading newspaper shall be the best.

#### 5、Adequate rest

It is highly recommended that you take a periodic rest, even if this Product has neither blink nor harm from radiation by using LED technique.

#### 6. Operation of remote controller

Never cover receiving window of remote controller or expose it to strong sunlight to keep good receiving sensitivity.

#### 7. Notices for dry cells of remote controller

The service life of dry cells is around 1 year (depending on your frequency of use). In case remote controller is faced with short operation distance and low flexibility, please replace both old cells of it.

**Note:** mixed use of new and old cells, or dry cells of different types is not allowed; otherwise, the remote controller can be damaged by liquid leakage. Please take out dry cells of a remote controller to be long idled. In case liquid leakage occurred, please firstly clean up the liquid in cell box before installing the new cells.

#### 8. Way of handling

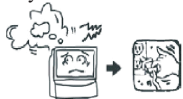
- Please firstly uplift this Product before handling.
- Make sure this Product is handled by at least two persons to keep its stability and protect shell.
- Do not scratch the screen during the handling.

#### 9. Condensation

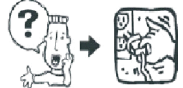
If this Product is moved from cold to warm place quickly, or from room with electric heater to other places, this Product may have puzzled interface, failed color display at certain images, or uneven color, all of which are caused by condensation in machine. The image can be recovered after volatilization of steam.

### IV. Safety Notice - Warning

4.1 Immediately shut off the power supply and unplug the socket in case of any smoke, and consult the dealer at once. Fire hazard or electric shock may occur if continuing using it.



4.2 If screen has no output of image or audio, please immediately power off this Product and unplug the power socket. If such fault occurs suddenly at normal state, please do not keep using this Product, but consult the dealer.



4.3 If this Product falls onto ground accidentally or shell is damaged, please immediately power off this Product and unplug the power socket. Please do not keep using this Product, but consult the dealer, to keep out fire hazard or electric shock.



4.4 Never plug in/out the power socket by wet hands to keep out electric shock.



4.5 Keep power socket free from accumulated dust to avoid degrading insulation performance of plug. Please regularly clean the dust to keep out a fire hazard.



4.6 Do not maintain, transform or disassemble this Product without permission; otherwise, electric shock, fire hazard or damage of internal parts may occur since this Product contains high-voltage and fragile articles. For details of maintenance, please refer to the Letter of Guarantee and consult the dealer.



Please use the whiteboard pen to vertically tap the center of the positioning cursor. Now the green light circle grades into orange. When the entire circle turns orange, the positioning of the point is finished, and the positioning cursor will automatically move to the next point, as shown below.



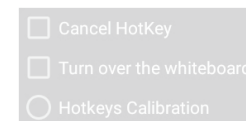
Repeat the above action until all points are positioned.

#### 7.2、Shortcuts setting

On the Android OS, not all the shortcuts on the left and right sides of the integrated machine are enabled. The shortcuts that are enabled are: 1 Switch mode, 2 Collapse toolbar, 3 New page, 4 Page up, 5 Page down, 6 Blue pen, 7 Red pen, 8 Black pen, 9 Highlighter, 10 Smart pen, 11 Eraser, 12 Undo, 13 Clear screen, 14 Text pen, 16 Open file

##### 1) Disable shortcuts

The default status of shortcuts is enabled. After Disable shortcuts is checked, the shortcuts function on the Android OS is not available. After it is unchecked, the shortcuts function is restored.



(Shortcuts are disabled if checked)

##### 2) Flip whiteboard

If the function of whiteboard flipping is enabled by service program on the Windows OS, shortcuts will be disabled on the Android OS, meaning it is also required to check Flip whiteboard on the Android OS ☐ Turn over the whiteboard.



##### 3) Shortcuts positioning

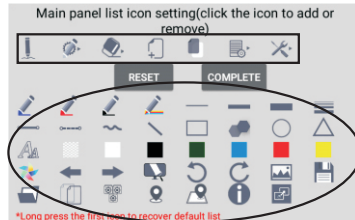
As illustrated, position the upper left/lower right corners of the 1st, 6th, 13th and 18th shortcuts on the left and right sides, and jump out of the positioning screen after finishing positioning.



## 5、Settings and about

### 5.1、 Main toolbar settings

The user can customize the main toolbar icons by tapping Settings  -Main Toolbar Icon Settings  to open the main toolbar icon settings window, as shown below:




The upper part of the window (boxed rectangle) indicates the icons currently displayed on the main toolbar, and the lower part (boxed oval) indicates the icons that can be added to the main toolbar.

Removing a main toolbar icon: Tap the icon displayed on the main toolbar to remove it. Tap the “Finish” button after setting.

Add a main toolbar icon: Tap the icon to be added in the lower part, and the icon will be selected and its function will be displayed at the bottom of the window. Tap again while it is selected and it will be moved to the main toolbar display area. Tap the “Finish” button after setting. After icon adding or removing, tap the “Restore Defaults” button to restore the main toolbar to its default state. Alternatively, long press the first icon on the main toolbar, and tap OK in the pop-up Restore Defaults dialog box.

## 6、Open Donviewshare receiver

After the Donviewshare receiver is installed on the Android OS of a Donview AIO, you can quickly open Donviewshare application with the button .





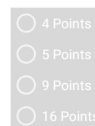
If the Donviewshare software is not installed, the following prompt appears:



## 7、Positioning and shortcuts positioning

### 7.1、 Positioning

For touch position correction on the Android OS, tap Settings  - Positioning  to offer options of 4-point positioning, 5-point positioning, 9-point positioning and 16 points positioning. After one of the positioning option is selected, it will jump to the positioning screen, as shown below.



4.7 Keep this Product free from long contact with rubber to protect this Product against shell metamorphism or coating peeling.



4.8 This Product is applicable to 220VAC power socket only. Never use this Product out of rated voltage (220VAC); otherwise, fire hazard or electric shock may occur.



4.9 In case of thunder or lightning, please do not touch antenna or power wire, but immediately unplug the power socket, so as to keep out electric shock.



4.10 Never place this Product in places with high temperature or direct sunlight to keep out abnormal temperature rise and fire hazard.



4.11 It is strongly recommended that you share wall-mounted plug to extension wire and other power consumption goods and, if it is inevitable, please check if its rated voltage is sufficient; otherwise, a fire hazard may occur if extension wire has excessive load.

4.12 Never place vase, flowerpot, glassware, cosmetic, chemical containers, liquid or small metal object on this Product to keep out fire hazard or electric shock if liquid or small object falls into it, and if it occurs, please immediately power off this Product and unplug the power socket, and consult the dealer.



4.13 Please well protect this Product against foreign matters to prevent fire hazard or electric shock. However, if foreign matters are found in it, please immediately power off this Product and unplug the power socket, and consult the dealer. Much attention shall be attached to preventing children from putting foreign matters in this Product.



4.14 Never expose this Product to oil, smoke and vapor, or near heater or dusty place to avoid degrading the image quality, fire hazard or electric shock.



## V. Safety Notice - Caution

5.1 Never block the ventilation hole of this Product, put screen face upwards, laterally or invert it. Never put this Product in poorly ventilated place, such as closet or bookshelf. The distance between machine and wall should be over 15cm. Never put this Product on carpet or flammable staffs, or cover it using curtain or tablecloth to keep out a fire hazard.



5.2 This Product shall be installed in stable place with good ventilation.

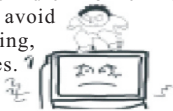


5.3 Never put heavy objects on this Product to prevent unstable center of gravity, inverting this Product or hazards by falling of heavy objects.



5.4 This Product shall be handled by at least two persons. It is needed to unplug the power wire plug, remove antenna and other devices before handling. It shall be handled with caution to avoid impact or screen damage.

5.5 Never stand or sit on this Product. For family with children, much attention shall be attached to preventing children from climbing or playing the TV to avoid displacement, overturning, damage or other injuries.



5.6 Never disassemble the rear cover, shell panel or any other cover to avoid electric shock due to high-voltage parts inside. Please consult the dealer for any adjustment or maintenance.



5.7 Never put this Product or power wire near the heater to keep out a fire hazard, since the surface of shell or power wire may have deformation and melting if being heated.



5.8 Please firstly unplug the power plug of motor before cleaning or maintenance; otherwise, an electric shock may occur. Please clean the screen using soft clothes to avoid scratching it (see maintenance chapter).



5.9 Never cut, twist, bundle, transform or bend the conduct, or pull it with much force during operation, or put anything heavy on power wire; otherwise, fire hazard and electric shock may occur due to damage of power wire. If power wire is damaged, please consult the dealer.



5.10 While unplugging the power plug, make sure to grasp the plug, instead of pulling the power wire, since it may damage the power wire and cause a fire hazard or electric shock.



5.11 Never place this Product in a shocking, tilted or unstable place; otherwise, this Product may be falling or overturned and thus leading to an injury or damage.



5.12 If this Product is to be long idled if you are in travelling or business trip, please unplug the power plug to keep out a fire hazard due to degraded insulation performance of power wire.

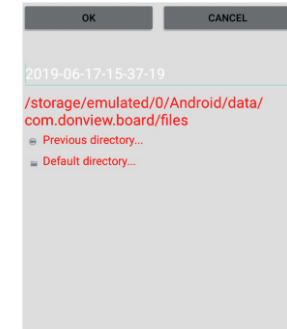
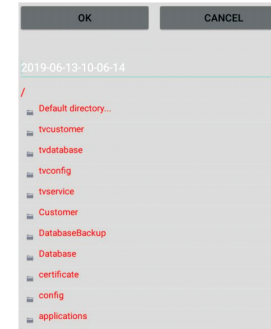


## VI. Introduction to Product Operation and Maintenance

1. Daily maintenance of touch screen
  - 1) Gently wipe off the dust on surface using buckskin or high-grade glass cloth.
  - 2) Fingerprint on touch screen of AIO shall be cleaned using specific detergent for LCD electronic whiteboard screen. While cleaning this Product using detergent, please wipe it from the center to the surroundings until the detergent is fully cleaned.
  - 3) In no way should water flow into the interface between electric whiteboard screen and framework to avoid burning the display due to short circuit.
  - 4) Never wipe the electric whiteboard screen using hard towel to avoid affecting the display effects due to fluffing.
  - 5) Stubborn oil dirt may be removed by pasting transparent tape on screen and then removing it.



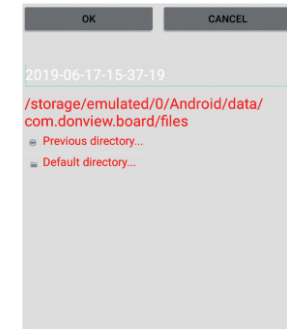
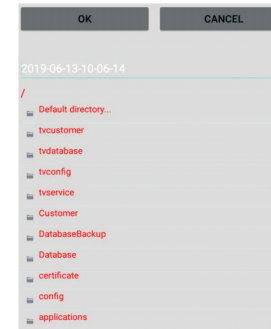
: Open the saved.donv file, tapped to pop up the file selection window (showing all the Android directories by default), where the user can tap the “default path” to go directly to the DonviewBoard install path, or select the USB path, or other local Android path, as shown below.



: Save current page as .png picture, automatically name after the machine's current time, and the picture can be viewed in the gallery.

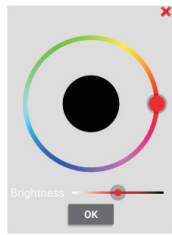


: Save all pages as .donv file, tapped to pop up the file saving window (showing all the Android directories by default), where the files are automatically named after the machine's current time, and the user can tap the “default path” to go directly to the path to install DonviewBoard, or select the USB path, or other local Android path, as shown below.



**Note:** Uninstalling and reinstalling the DonviewBoard software will automatically delete all files in the installation directory. If the files are saved in the default path, uninstalling and reinstalling the software will delete the previously saved files. If you don't want the files to be deleted, you can choose to save them in the other local Android path.

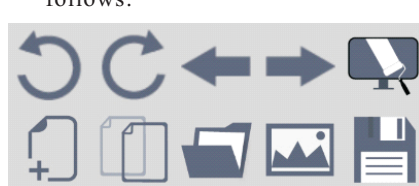




- : Blue, red and black pens, which can be tapped to quickly switch the pen colors.
- : Pen color settings, which offer various color options and take effect after the color is selected, the brightness is adjusted and OK is tapped.
- : Pen size, including 5, 20, and 50.
- : Pen size settings, which offer sizes 1-80.
- : Curve, which allows a switch from Draw status to Annotate status without changing the solid or dashed line setting of the pen.
- : Straight line, selected to keep drawing straight lines.
- : Text, selected to add an input box when tapping on the whiteboard page, where you can input text; you can do it all over again after each input.
- : More graphics, including circle, triangle, and rectangle.
- : Circle, selected to keep drawing circles.
- : Triangle, selected to keep drawing triangles by tapping on three points on the page.
- : Rectangle, selected to keep drawing rectangles.

#### 4.2.1、Page features

DonviewBoard for Android provides various page operations, including creating a new page, setting page color, undo and redo, page up/down, page clearing, page preview, saving picture, saving file, and opening saved file. The corresponding icons are as follows:



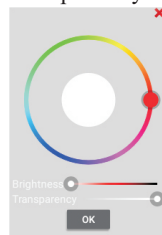
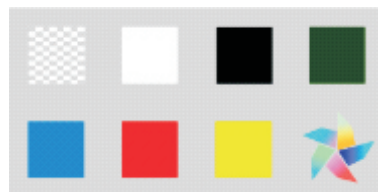
- : Undo the last action on the page.
- : Redo the undone action.
- : Page up. : Page down.
- : Clear page, which allows clearing of all the annotations (including graphics and texts) on the page by one tap.



: New page, which allows creations of a new blank page.



: Set page color, which offers convenient colors, such as transparent, white, black, green, blue, red and yellow, provides multi-color settings, and allows users to customize background color, and adjust brightness and transparency.



#### 2、Daily maintenance of display:

1) It is needed to turn off the display or reduce the brightness if it is idled; otherwise, the display may be burnt due to burning or aging of internal parts after longterm operation. Besides, certain LCD pixel may be overheated and further lead to internal burning if the LCD has longterm and continuous display of certain content. Therefore, it is needed to turn off the LCD screen or screen saver if it is idled, or display all white contents of electric whiteboard screen.

2) Unnecessary vibration shall be prevented: spare parts of LCD are highly sensitive and accurate and screen may be damaged due to strong vibration.

#### 3. Introduction to daily operation:

1) Maintain humidity of environment at a certain degree.

2) It is needed to start, stop and operate this Product correctly in order to protect data and prolong the service life of it.

3) It is needed to start/stop this Product in strict accordance with the sequence; firstly turn on the screen before starting computer; and firstly turn off the computer before stopping the Product; power off until the indicator lamp of computer and screen is off.

4) It is forbidden to write or draw on the touch infrared frames at four edges, or damages the infrared frame using any objects; besides, it is needed to clean the dust on them on a regular basis to avoid affecting the infrared touch function.

5) Electric products shall be free from humid, shocking and unstable position.

**Statement:** this Product may realize zero energy consumption only if it has no connection to external input power supply.

### VII. Introduction to Quick Use

#### 1、Introduction to startup & shutdown of Donview AIO

①、Make sure power wire is well connected (power socket of AIO is connected to the left or right side of screen) and power supply is safe.

②、Press the power switch which faces downwards at the left side (or right side) and now, the remote control receiving window at the lower right corner of AIO should be red, which means, the AIO is ready to be started.

③、The power button on remote controller has the same function with "POWER" button at lower right corner of screen. If the remote control receiving window at lower right corner of screen becomes red, press "POWER" button or power button on remote controller, the remote control receiving window will become orange and enter startup picture at the same time. If AIO has computer, it will be automatically started several minutes after start of screen.

④、The user may have other operations after successful startup of Donview AIO.

⑤、If this Product is under startup state, the user may click "POWER" button at lower right corner of screen, or power button on remote controller to pop up the prompt of whether shut down on screen; Select "Yes" to turn off screen and computer; the remote control receiving window becomes red and AIO enters standby state.

⑥、If this Product is under standby state, turn off the downward power switch at the left side (or right side), the remote control receiving window at lower right corner of AIO is off and AIO has normal shutdown.

#### 2、Quick use of remote controller

①、Reverse the remote controller, install two AAA alkaline batteries and close the cover of battery bin.

**Note:** never use rechargeable batteries such as nickel cadmium battery to ensure correct operation, since such batteries may have different shapes and performance. The waste batteries shall be disposed in an environmentally friendly way.

②、Press "Signal Source" button on remote controller to quickly switch to the channel needed, including AV and YPbPr, VGA and HDMI by using Up, Down and OK key.

③、For detailed functions of remote controller, please refer to Article X of this Manual Introduction to Use of Remote Controller.

#### 3、Operation method for external PC of Donview AIO

There are three operation methods of external PC of Donview AIO: connection via VGA wire (self prepared); connection via HDMI wire (accessory or self prepared).

**In the first method, it should be connected through the following steps:**

①、Connect VGA wire end to the VGA output port at left side(or right side)of AIO,and connect another end to VGA end of PC.

②、Connect the end of USB wire to“TOUCH USB”end at left side of AIO,connect flat end of USB to the USB port(touch is available if this end is connected) of external PC.

**In the second method, it should be connected through the following steps:**

①、Connect HDMI wire end to the HDMI port at front side of AIO,and connect another end to HDMI port of external PC.

②、Connect the flat port of USB wire to TOUCH-USB port at front of AIO,and connect another flat port to external USB port(touch is available if this end is connected).

**In the third method, it should be connected through the following steps:**

①、Connect HDMI wire end to the downward HDMI port at left side of AIO, and connect another end to HDMI port of external PC.

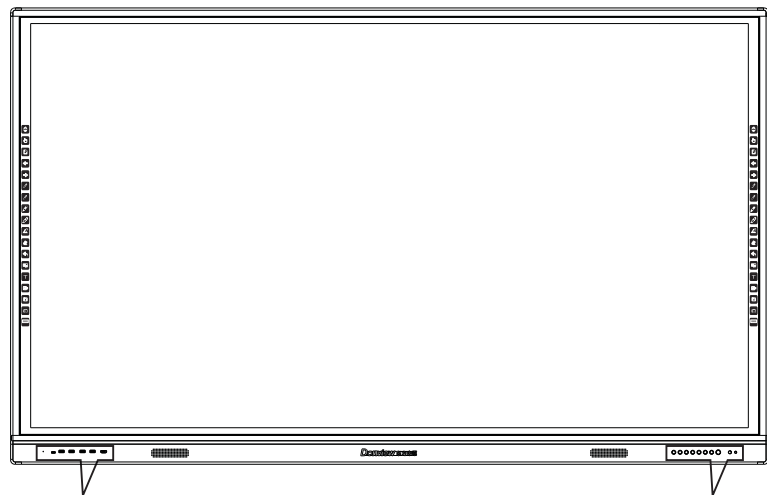
②、Connect the square opening of USB wire to the “TOUCH-USB”port at left side of AIO,and connect the flat side of USB port to the USB port of external PC(touch is available if this end is connected)

**Suggestion:HDMI interface at front panel is connected to HDMI wire≤3m;The HDMI interface at lateral side is connected to HDMI wire ≤5m.**

After wiring is finished, you may switch the screen of external PC to the screen of Donview AIO for display and touch operation.Now,the user may write and mark using whiteboard software of external PC. For details about installation and operation of whiteboard software,please refer to detailed introduction to installation and operation of whiteboard software in this Manual.

**Note:** For any inconsistency between the real object and introduction in this Manual, the real object shall prevail.

## VIII. Control Panel



Left Control Panel

Right Control Panel


## 3、Starting program


Tap the application icon (for a Donview infrared LCD integrated machine, tap the home icon or the shortcut toolbar icon) to open the software, and the main toolbar appears on the left side of the screen. Now annotating is available on the current Android screen.

## 4、Basic operation


### 4.1、Switching status


#### 1) Desktop status and Annotate status

After opening the software,the default status is Annotate,which allows such operations as annotating and drawing.In the Annotate status,tap the first toolbar icon  to switch to the Desktop status.


The Desktop status allows to operate other applications on the desktop.Tap the floating icon  in the upper left corner to switch to Annotate status.

#### 2) Collapsed status and Expanded status

In the Annotate status, the toolbar is expanded by default. Tap the second toolbar icon  to switch to Collapsed status. Now the toolbar remains in Annotate status before it is collapsed.

When the toolbar is in Collapsed or Expanded status, long press icon  to move the toolbar.



### 4.2、Closing software

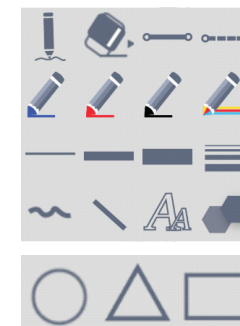
Tap the last toolbar icon  to close the software. Before it is closed the prompt “Do you need to save the file?” pops up. Tap “Cancel” to quit exiting the whiteboard software, tap “Yes” to save the annotations and exit the software, and tap “No” to exit the software without saving the annotations.





## 4.2、Main features


### 4.2.1、Annotation features


Tap the annotation pen icon  on the toolbar to quickly select a pen status for annotation; tap the pen setting icon  to set the annotation pen. The pen setting features are as follows:



 : Annotation pen, which, despite attributes that are set, once tapped becomes a red pen with font size 5, solid line, and curve.

 : Eraser, which is divided into large, medium and small sizes, and can be used to erase annotations, graphics, and texts.

 : Solid line, which once switched from dashed line can be used for annotating or drawing.

 : Dashed line, which once switched from solid line can be used for annotating or drawing.

3、Use of Whiteboard Software in Android System

DonviewBoard for Android is a practical software installed on the Android OS, which integrates such features as annotating, drawing, saving picture and saving annotation. It is easy to operate with simple icons, and allows commenting on the Android OS.

1、Operating environment

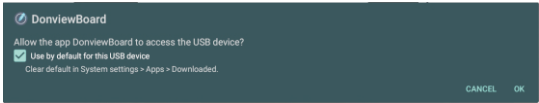
DonviewBoard for Android supports Android 5.0 and higher.

2、Software installation

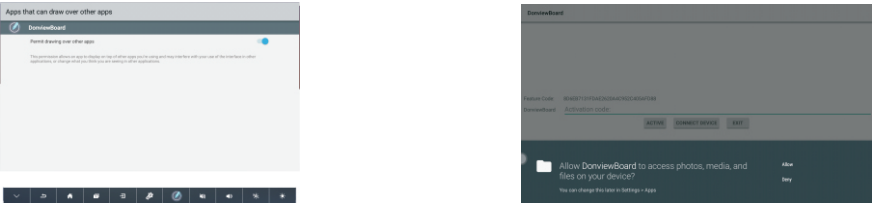
On the Android OS, tap on the .apk file of DonviewBoard for installation, and the following screen will appear. Tap Install in the lower right corner, and tap Finish or Open after installation is done.



Start the software on Donview AIO to pop up a prompt box, as shown below (“Do you want to allow the application ‘DonviewBoard’ to access the USB device?”), restarting the software will no longer pop up this prompt without switching to the Windows system or restarting the AIO.), and tap OK to enter the software. (If you tap Cancel, shortcuts and positioning are disabled)

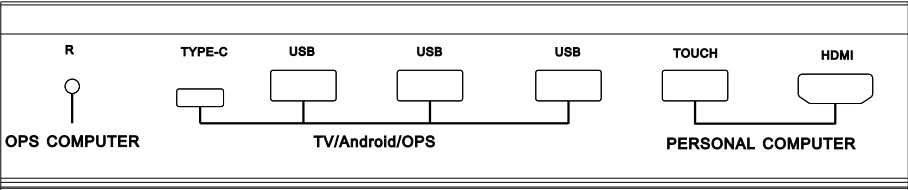


For Android OS 6.0 and higher, the first time you open DonviewBoard after installation, a window showing that permissions are required will pop up. You need to give permission to the application in the pop-up window to open the software normally. The specific operation is shown as follows:



On an AIO other than Donview brand or Android tablet/phone, the first time you start the whiteboard software, the activation screen will appear. After entering the activation code, tap “Activate” to open the software.

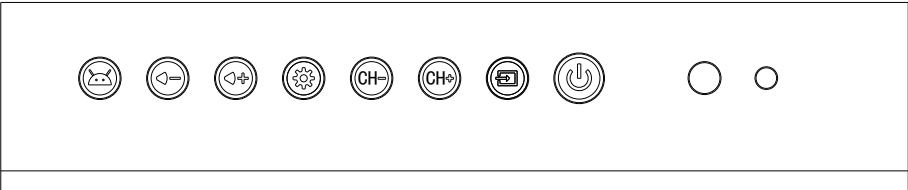
Left control panel



S/N	Port Name	Function
1	OPS Reset	System recovery pinhole of OPS .
2	TYPE-C	TYPE-C interface on TV/Android/OPS system(Public USB3.0, 5V/0. 9A).
3	USB3.0	USB interface on TV/Android/OPS system(Public USB3.0, 5V/0. 9A).
4	USB 3.0	USB interface on TV/Android/OPS system(Public USB3.0, 5V/0. 9A).
5	USB3.0	USB interface on TV/Android/OPS system(Public USB3.0, 5V/0. 9A).
6	TOUCH	USB interface for HDMI1 Touch connection.
7	HDMI1	HDMI1 wiring interface (HDMI wire ≤3m recommended).

**Note:**The front USB3.0 and TYPE-C port can carry up to two 5V/0.9A power at the same time, 9W in total.

Right control panel



S/N	Port Name	Function
1		Menu button to switch between Android and Window.
2		Volume regulation button.Press button on screen menu to adjust volume and adjust volume in other sub menus.
3		Switch button to display menu on screen.
4	CH- and CH+	Press “CH-” to confirm entering sub menu, press “CH-” & “CH+” to select sub menu, select signal source; or to select channel in TV mode.
5		To switch signal source.
6		Power switch.
7		Remote control receiving window.
8		Light-sensitive receiving window.

## IX. Introduction to Ports at Rear Side

Introduction to ports at lower left side



S/N	Port Name	Function
1	RJ45 OUT	Cable output interface.
2	RJ45 IN	Cable input interface.
3	HDMI OUT	HDMI output port.
4	RS232	Cable input interface.
5	VGA IN	Rs232 interface (serial port).
6	VGA AUDIO IN	VGA input interface (non built-in computer).

Introduction to left ports



S/N	Port Name	Function
1	SPDIF OUT	Optical audio output.
2	Earphone out	Earphone interface.
3	AV in	Av video input port.
4	USB2.0	USB interface on TV/Android/OPS system(Public USB2.0, 5V/0.5A).
5	HDMI IN	HDMI input port (HDMI wire ≤5m recommended).
6	TOUCH USB	USB interface for touch connection.
7	DP	Display Port input port(DP wire ≤3m recommended).
8	TYPE C	TYPE C input port(TYPE C wire ≤3m recommended,5V/3A).
9	USB3.0	USB interface on TV/Android/OPS system(Public USB3.0, 5V/0.9A).
10	BT	TV Bluetooth interface.
11	TV WIFI1	TV wireless network interface.
12	TV WIFI2	TV wireless network interface.

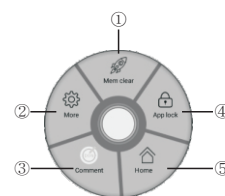
**Note:**The USB3.0、USB2.0 and TYPE-C port can carry up to 5V/4.4A power at the same time, 22W in total.

## 4. Use of floating menu

- 1) Conceal this floating menu: click it under Android channel to conceal the floating menu.
- 2) Return/Exit key: to exit current interface of application and return to the previous menu.
- 3) Homepage key:to return to the homepage of Android system.
- 4) List key: to list out the enabled applications.
- 5) Signal source switch key : to switch signal source.
- 6) Menu key: to pop up the menu window.
- 7) One-key start of whiteboard software:click it to open whiteboard software in Android system.
- 8) Mute:to enter mute state of system.
- 9) Volume:to volume up/down the screen.
- 10) ECO key: click it to have black screen;touch it again to recover.
- 11) Backlight mode:click it to switch between standard,ECO,self-defined and auto modes of backlight.

## 5. Use of homepage of Android system

- 1) Whiteboard:click it to open and use whiteboard software under Android system.
- 2) Browser: to open the browser under Android system.
- 3) Applications: click it to view all applications under Android system.
- 4) File Manager: to open the directory of file manager under Android system.
- 5) Settings: click it to open directory for Settings under Android system.
- 6) System assistant: click system assistant to open the functions such as Memory Acceleration,More, Writting,Lock application and Homepage.



- ①、Memory Acceleration:Optimize memory usage by defragmenting memory and repairing memory leaks caused by some applications, increase system speed.
- ②、More: set for the system assistant.
- ③、Comment : Mark on the display screen.
- ④、Lock application:to set password lock to Android applications.
- ⑤、Homepage: to return to the homepage of Android system.



## XII. Use of Android System

### 1、 Switch from Computer System to Android System

1) Click “Homepage” key on remote controller to switch to homepage of Android System, as shown in figure below:




Homepage of Android System

2) Or press “” button on keyboard to switch to homepage of Android System.  
3) Floating menu is as shown in figure below. Touch the “” key in floating menu to open the homepage of Android system.



Floating menu for Android System

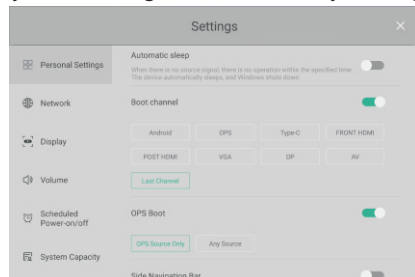
### 2、 Switch from Homepage of Android system to built-in computer

1) Click “Homepage” button of remote controller at homepage of Android System, or touch “Built-in computer” on homepage using pen or hands to realize the switch.  
2) Click “” button on front panel at homepage of Android System to switch to “Built-in computer”.

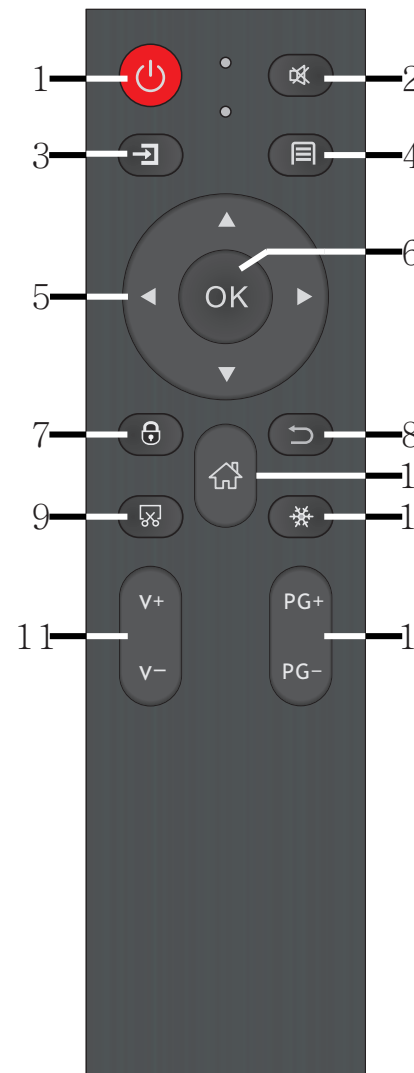
### 3、 Android System Setting

Enter Setting menu, you can select ,Press ← key to exit the main menu.

Settings: Personal Settings/Network/Display/Volume/Scheduled Power-on/off / System Capacity/System Settings/Restore Factory Settings/About the Device.



## X. Introduction to Remote Controller



1、 **Power (standby key):** press this key to enter the mode of startup or standby.

2、 **Mute:** press mute key to enter mute mode. The mute mark is shown at upper left corner of screen. Press this key again to release mute state and the mark on screen will disappear.

3、 **Signal source:** press this key to pop up list of signal source; press UP and Down arrow to switch the input signal sources, including TV, analogue TV, component, computer, HDMI 1, HDMI 2, built-in computer, Android and video.

4、 **Menu:** press this key in all modes to display the overall setting options.

5、 **Direction key:** press UDRL (Up, Down, Left, Right) key to adjust or select menu options.

6、 **OK key:** press this key to confirm certain option.

7、 **LOCK:** press this key to lock screen, remote controller and functions of key.

8、 **Exit:** press this key to exit present menu.

9、 **PRSRN:** Press this button to capture the screen and save.

10、 **Homepage:** Press this key to switch from WINDOWS to homepage of Android.

11、 **Volume:** Press Volume “+” or “-” to adjust volume. Press this key under mute mode to release mute state.

12、 **Freeze:** Press this button to freeze the picture of current playing screen and continue to play audio.

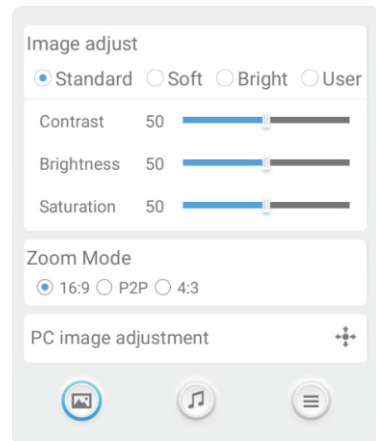
13、 Press this key to switch channel, or page up/down.



## XI. Introduction to Menu Operation

Press "Menu" key to display Menu, The items are different in each source. And press ▲/▼/◀/▶ to select sub menu. Press "OK" key to sub menu. Press ◀▶ keys to change the value. Press "EXIT" key to exit menu.

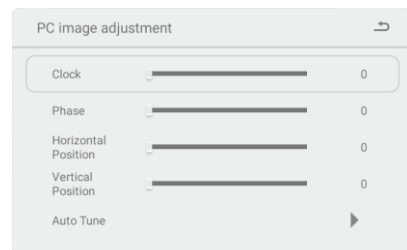
### 1、Image adjust



Enter Image Menu, you can select :Contrast, Brightness, Saturation ;Zoom Model select: 16:9 / P2P / 4:3, PC Image adjustment (only available in VGA Source) by pressing ▲▼ keys to change the value.

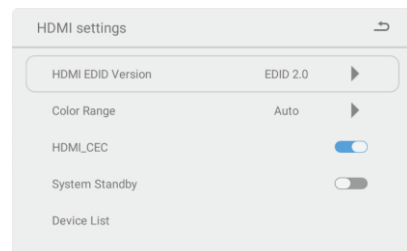
- The items are different in each source.Press ▲▼ keys to select the different items.
- Press "OK" key to enter the sub-menu.
- Press ◀▶ keys to change the value.
- Press "EXIT" key to exit menu.

#### ①、PC image adjustment



Enter PC image Menu, you can select : Clock, Phase, Horizontal Position, Vertical Position, Auto Tune, by pressing ▲▼◀▶ keys to change the value.Press "OK" key to Auto Tune adjust the window. (only available in VGA)

#### ②、HDMI settings

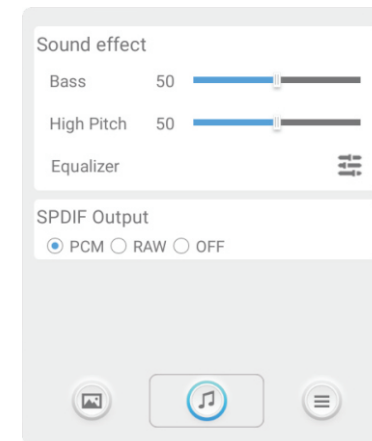


Enter HDMI Settings Menu, you can select EDID Version, Color Range, HDMI\_CEC, HDMI\_ARC, CEC Standby, CEC Device List items ,by pressing▲▼ keys, Press◀▶ keys to change the value.

#### **Note:**HDMI\_CEC

We can use the HDMI line to connect TV HDMI\_CEC port and equipment with HDMI\_CEC. So that we can realize TV and CEC equipment Power On, and CEC equipment Standby also can shut down the TV.

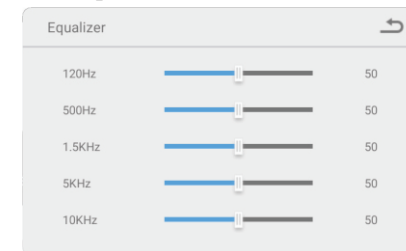
### 2、Sound effect



Enter Sound Mode,you can select Bass,High pitch,Equalizer, AVC, SPDIF Output, Alone items ,by pressing ▲▼ keys.

- The items are different in each source .Press ▲▼ keys to select the different items.
- Press "OK" key to enter the sub-menu.
- Press ◀▶ keys to change the value.
- Press "EXIT" key to exit menu.

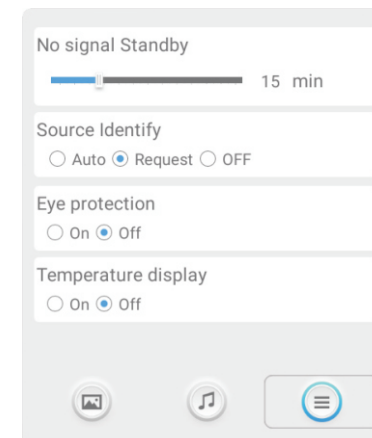
#### ①、Equalizer



Enter Equalizer,you can select 120Hz,500Hz, 1.5KHz, 5KHz,10KHz items, by pressing ▲▼ keys.

- Press ▲▼ keys to select the different items.
- Press "OK" key to enter the sub-menu.
- Press ◀▶ keys to change the value.
- Press "EXIT" key to exit the main menu.

### 3、More Menu



Enter more Menu, you can select Regular boot and shutdown,Signal Identify,Eye protection by pressing ▲▼ keys.

- The items are different in each source. Press ▲▼ keys to select the different items.
- Press "OK" key to enter the sub-menu.
- Press ◀▶ keys to change the value.
- Press "EXIT" key to exit menu.

**Note:**No signal standby:It only works with non -Android sources.